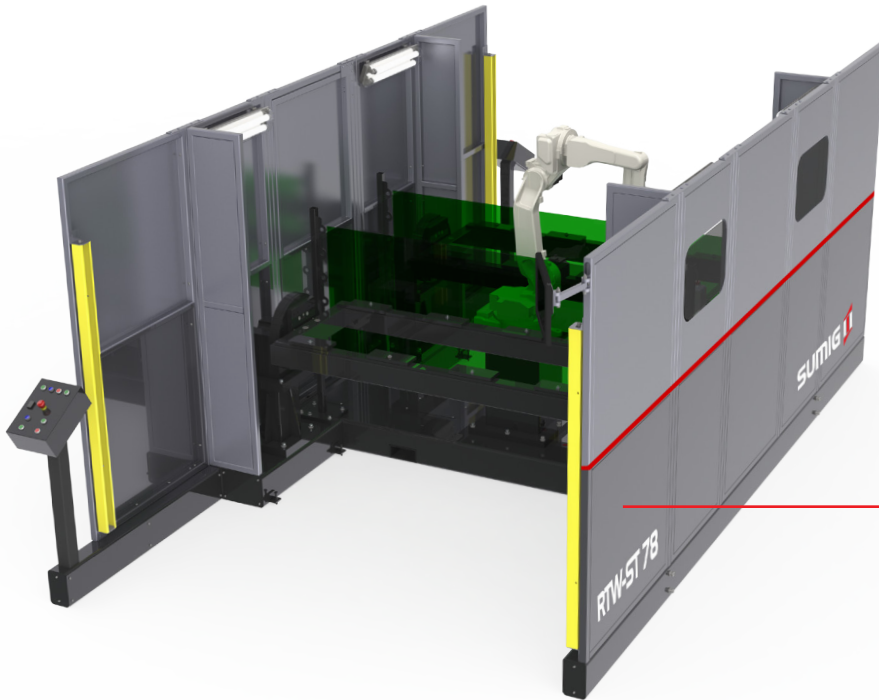




Ready to Weld



Quick installation with rigid base and optimized working area

Designed for high productivity with big lots

Monitored maintenance door

Easy to move and integrate with any robot brand and welding inverter.



Cell has machined tables with guide bushes for positioning and 01 (one) workstation with safety relays in compliance with ANSI/RIA 15.06 Standard.

Ready-To-Weld robotic welding system offers the best cost benefit ratio. Designed for welding of medium size parts and where shop space maybe an issue. Increase your productivity easily and quickly, allowing an easy integration with any robot brand and power-source.

Tabletop dimensions	30" x 78"
Maximum table load capacity	2204 lb
Maximum cell power requirements	66A
Input Voltage/Current	200V to 240V (three-phase)
Cell Dimensions	146" L x 173" W x 83" H
Weight	6300 lb
Power requirement	26 kVA (according to welding robot and inverter)
Air Requirements/Flow Rate	87 Psi/0.59 Cfm

All inclusive Package



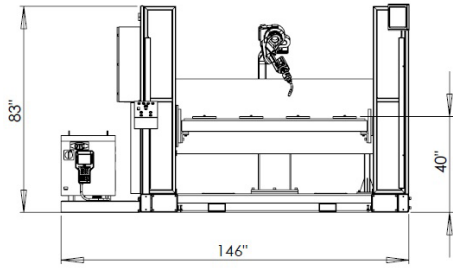
+



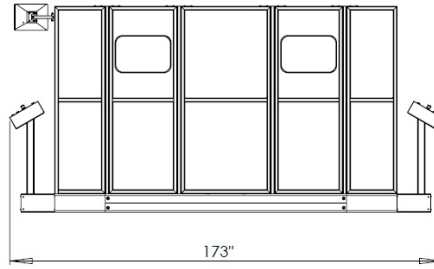
+



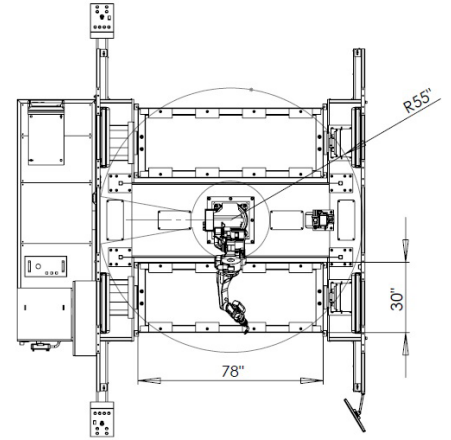
Measures



Front



Side



Working Area

Standard Components



6 axis

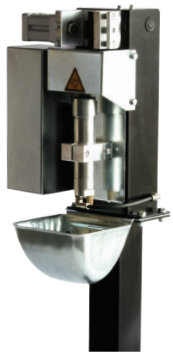


400 Amp Inverter

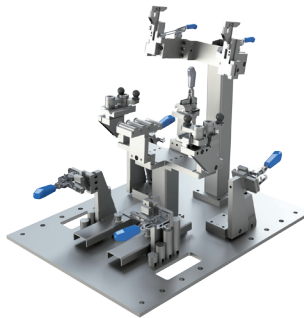


400 Amp Air Cooled Torch with Safety Clutch

Optionals



Torch Cleaner and Wire Cutter Unit



Tooling



Neuron-S Adapt



SUMIG USA CORPORATION
8600 Commodity Circle #159
Orlando, FL 32819

☎ +1 800 503 9717
🌐 www.sumigusa.com
✉ sumigusa@sumig.com